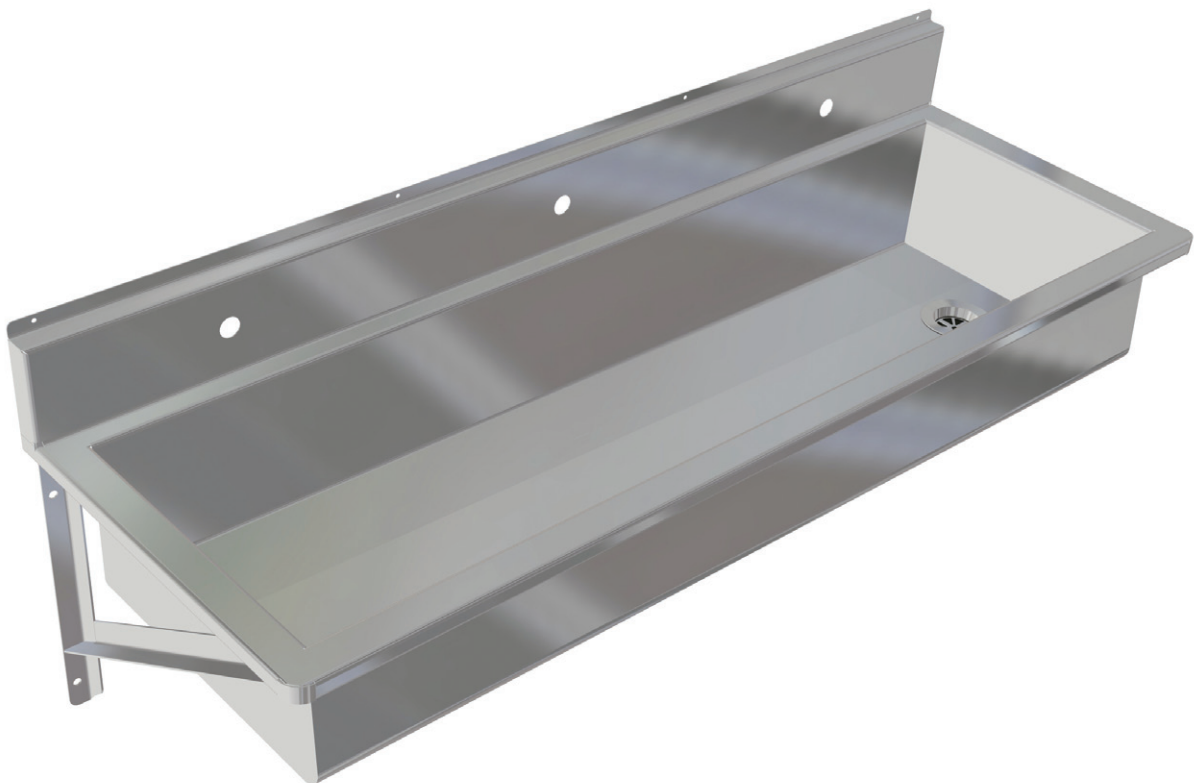
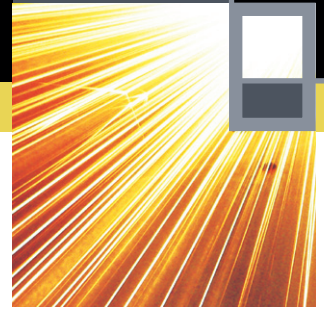




Stainless Metal Craft (Aust) Pty Ltd
6 Bromley Road, Emu Plains NSW 2750
P. 02 4735 5666 F. 02 4735 7950
E. info@smcstainless.com.au
www.smcstainless.com.au

WASH TROUGHS

WASH TROUGH WT2



FEATURES

- Radiused Corners to Front Fascia
- Wall Mounting Brackets Supplied
- 50mm Plug & Waste Supplied

OPTIONS

- Custom made - Length, Tapware & Drainage will vary depending on your application & Client. Please consult our Office
- Design Profile is variable to suit your Special Application

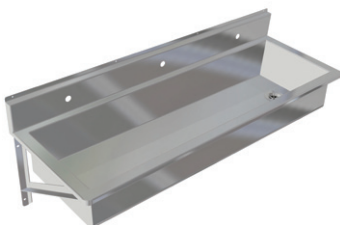
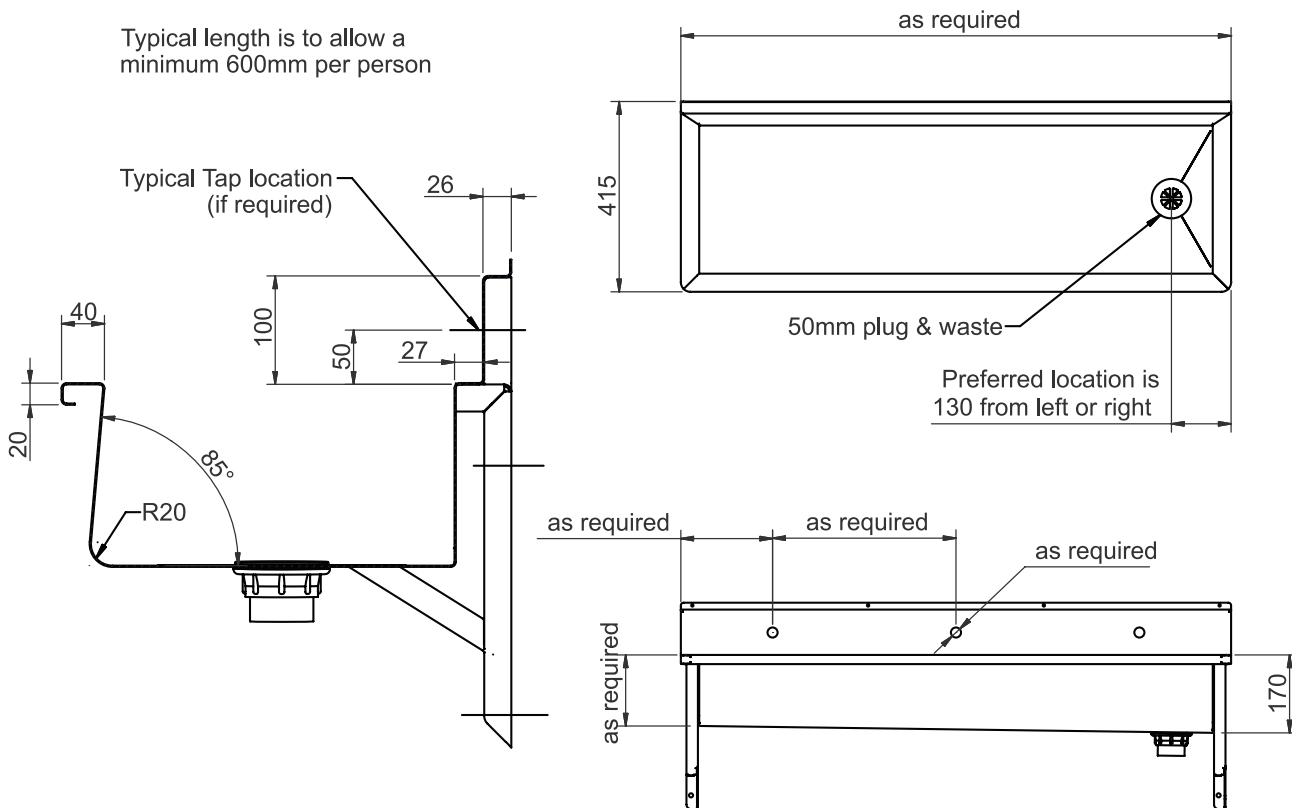


WASH TROUGHS

WASH TROUGH

WT2

Typical length is to allow a minimum 600mm per person



SPECIFICATIONS

Stainless Steel Wash Trough shall be Model WT2 from Stainless Metal Craft.
 Phone 02 4735 5666