

BASINS & SINKS

HAND BASIN FOR THE DISABLED

WB8



Unit Shown
Fully Optional

FEATURES

- Round Front Basin with smooth internal corners for hygiene and cleanliness
- AS 1428 Compliant when mounted at the regulation height
- Tapware Plumbing can be totally concealed within basin
- Wall mounted through concealed fixing holes
- 38mm Plug & Waste Supplied

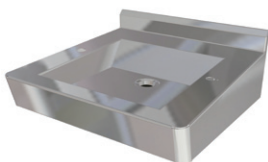
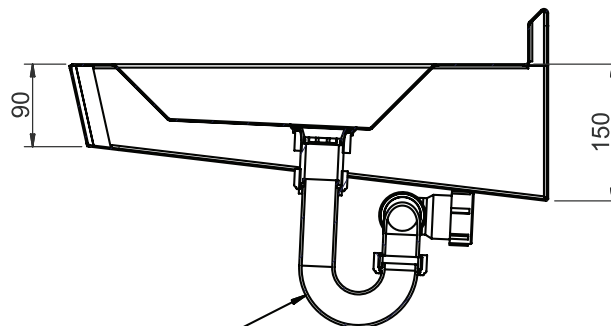
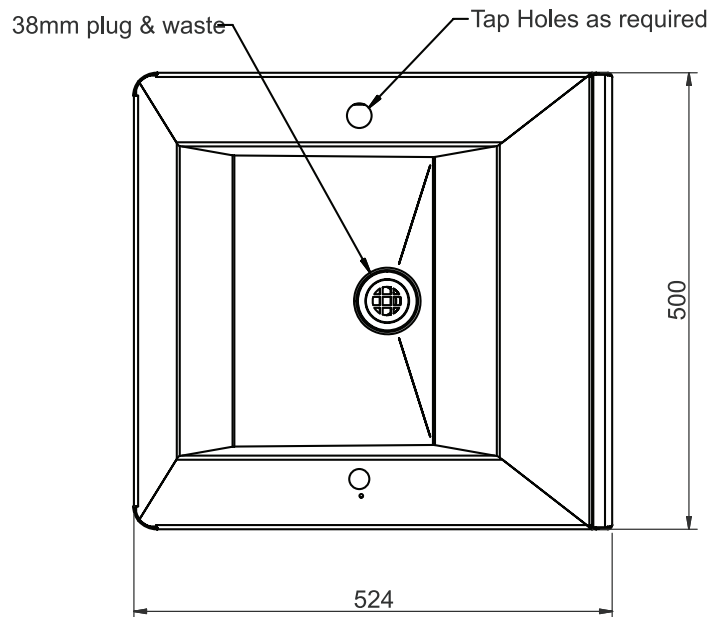
OPTIONS

- Tap Holes as Required
- Tapware, which can be Pre-fitted for ease of installation
- Plastic P Trap, Pre-fitted
- Removable Trap Cover

BASINS & SINKS

HAND BASIN FOR THE DISABLED

WB8



SPECIFICATIONS

Stainless Steel Hand Basin for the Disabled shall be
Model WB8 from Stainless Metal Craft.
Phone 02 4735 5666