

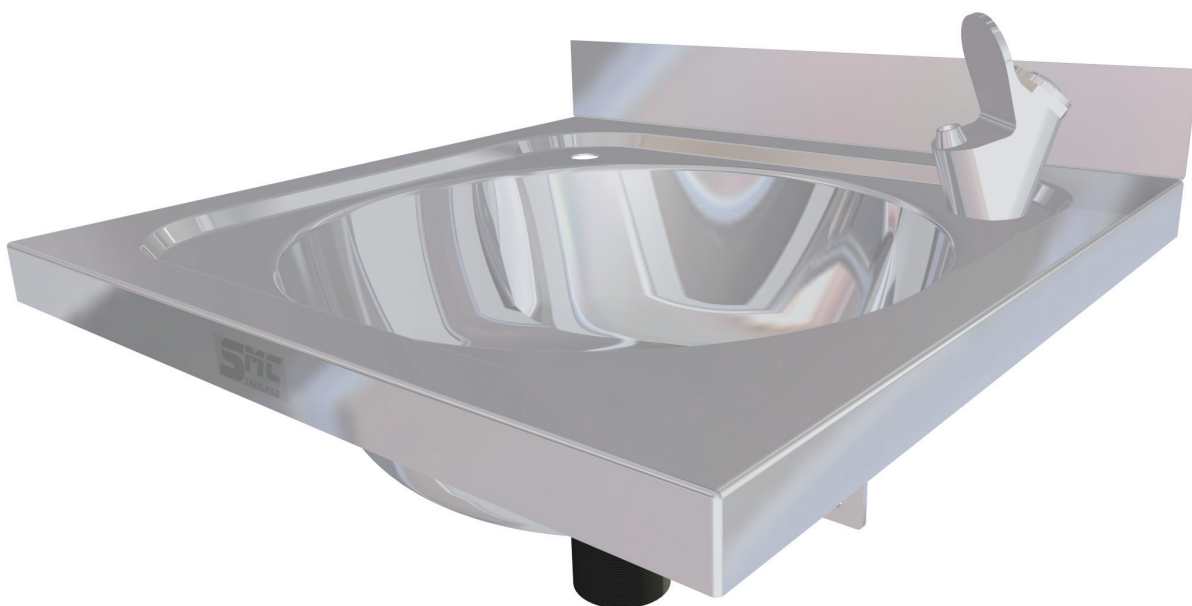


Stainless Metal Craft (Aust) Pty Ltd  
6 Bromley Road, Emu Plains NSW 2750  
P. 02 4735 5666 F. 02 4735 7950  
E. info@smcstainless.com.au  
www.smcstainless.com.au

## DRINKING FOUNTAINS

### DRINKING FOUNTAIN WALL MOUNTED

SCW201A



#### FEATURES

- Single User, Compact Design
- Press Button Bubbler Included
- Wall Mounting Bracket Supplied

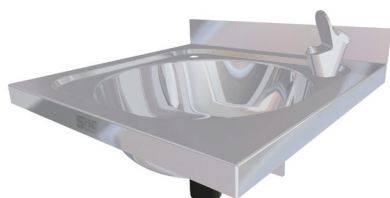
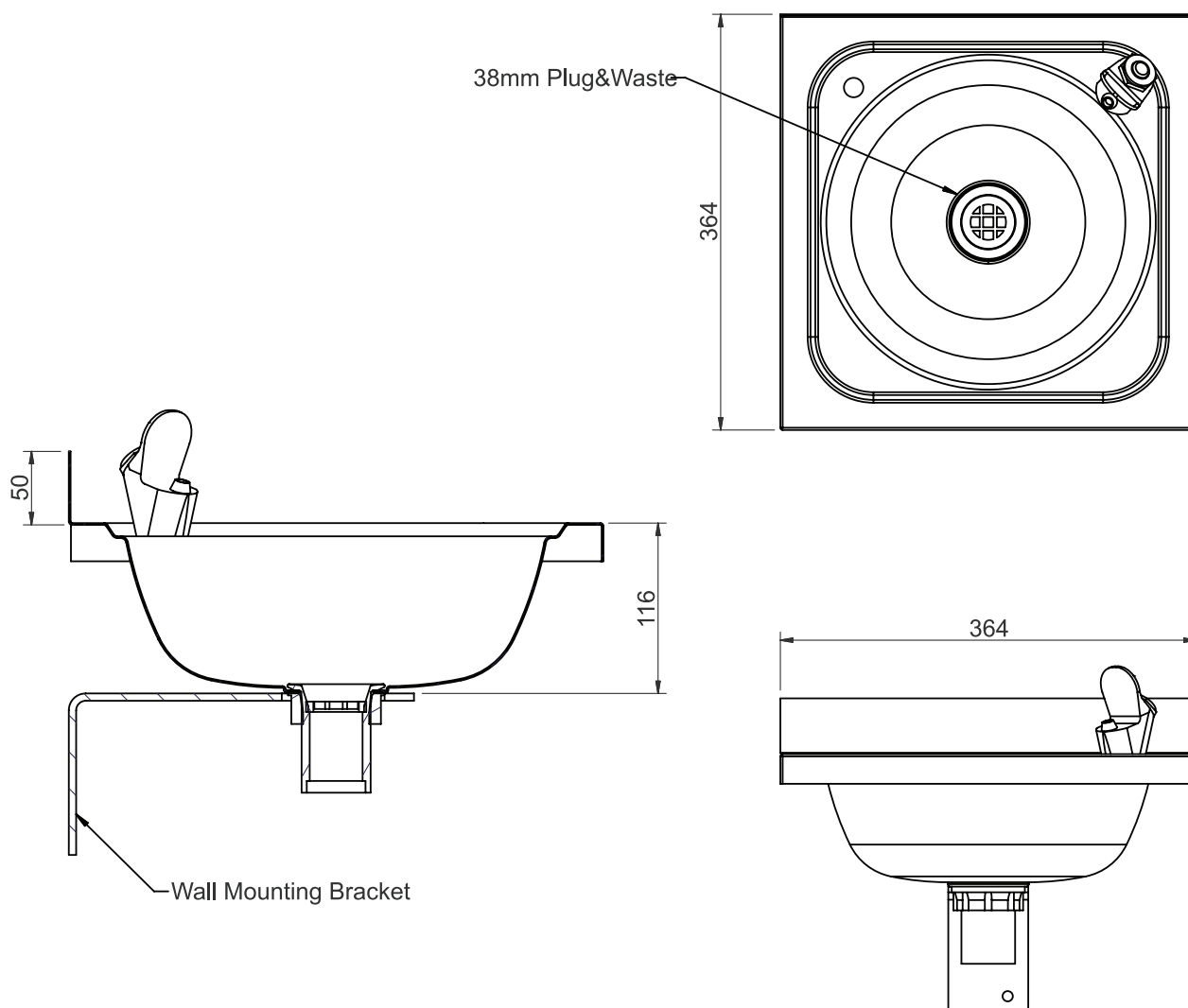
#### OPTIONS

- SMC Bottle Filler Fitted
- Your choice of Tapware fitted
- Rounded Front Unit available



DRINKING FOUNTAINS

DRINKING FOUNTAIN WALL MOUNTED  
SCW201A



SPECIFICATIONS

Stainless Steel Drinking Fountain Wall Mounted shall be Model SCW201A from Stainless Metal Craft.  
Phone 02 4735 5666